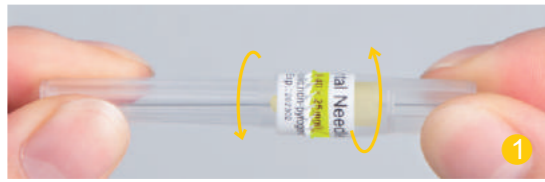
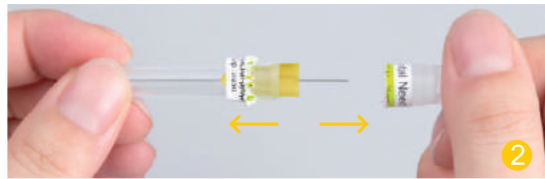


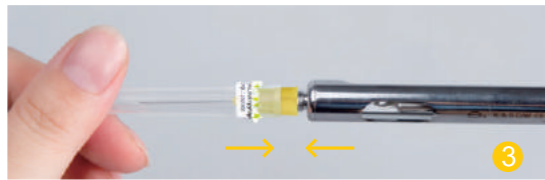
Instructions



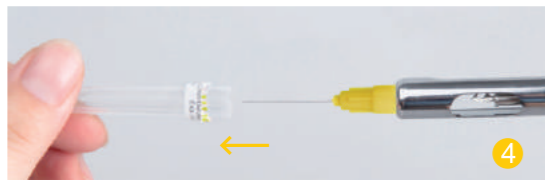
When using, hold the effective needle sheath in one hand and the butt-end sheath in the other hand, twist in the opposite direction.



When the sealing label is torn, the butt-end sheath is removed horizontally.



Insert the butt-end needle into the hole center of the screw needle holder of the dental syringe, rotate the effective needle sheath, and install the dental needle on the dental syringe;



The effective needle sheath is then removed to avoid needle tip damage and contamination.



Injections should be performed according to the relevant operating standards of the dental department; the dental needles should be discarded in the sharp instrument box immediately after use.

Type Specification

Size		Color	the butt-end needle length(mm)	the effective needle length(mm)
(gauge)	(mm)			
30G	0.3	● yellow	12	13
30G	0.3	● yellow	12	21
27G	0.4	● medium grey	12	25
27G	0.4	● medium grey	12	32

Shanghai Kindly(KDL) Group Nanchang Kindly Medical Technology Co.,Ltd.

Add: F/7, Tower A, No.77 North Aixihu Road, Nanchang High-Tec Industry Development Zone, Nanchang, Jiangxi. China

Post Code: 330096

Tel: +86-0791-86861216 Web: www.kdInc.com

Mob: +86-13922143599 E-mail: Melvin.lu@kdInc.com

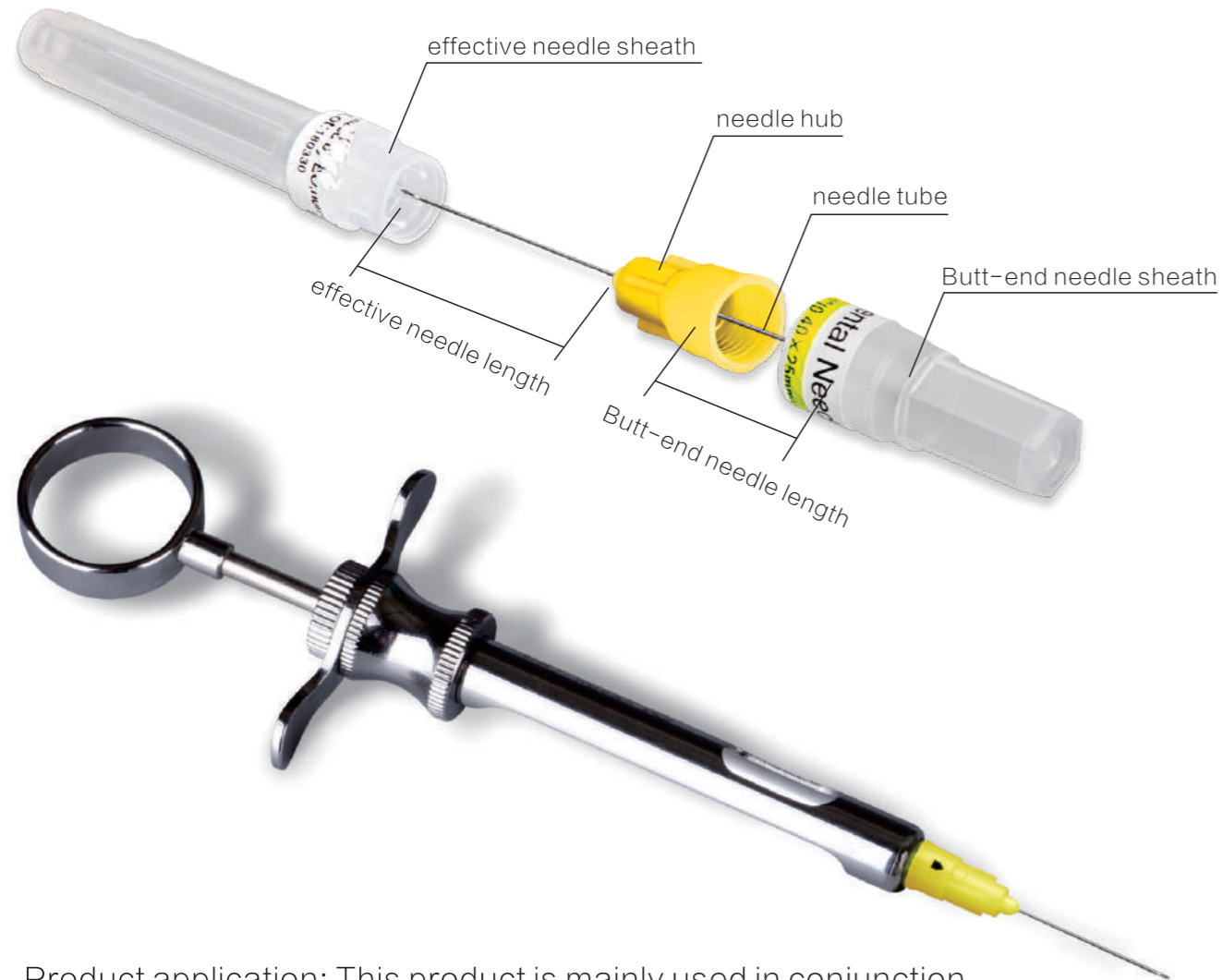


Dental Needles for single use

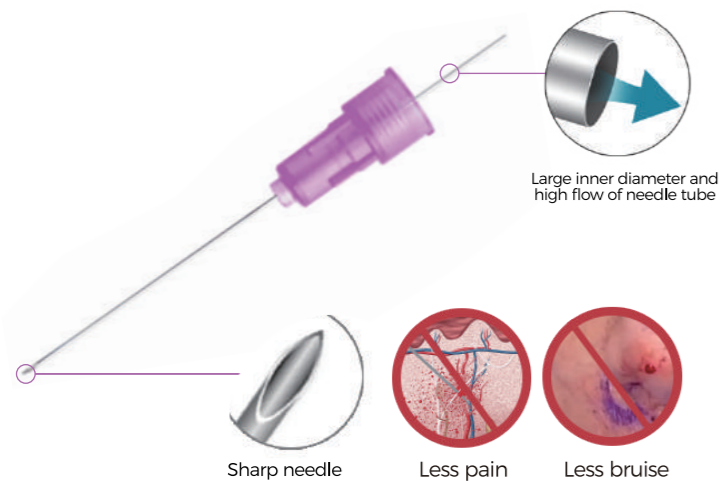
Take care of your oral health professionally.

Nanchang Kindly Medical Technology Co.,Ltd

Product structure



Product application: This product is mainly used in conjunction with dental syringe for local dental anesthesia.



Product advantages


30th Specializing in the manufacture of medical puncture needles for 30 years

As a domestic standard-setting unit and a member of the National Dental Equipment Standardization Technical Committee, Shanghai Kindly Global Trading Co., Ltd., has 30 years of professional experience in manufacturing various medical needle products.

safer

1. Compared with the traditional luer single-head dental injection needle, it avoids the risk of destructing the needle tip while puncturing the stopper of the anesthetic bottle due to the suction of anesthetics, ensures the sharpness of the needle tip.
2. Compared with the traditional luer needle, it avoids the risk of accidental needle falling into the inlet cavity.
3. Reduce the risk of contamination of liquid medicine.

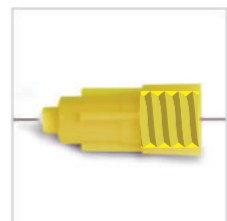
double head	VS	traditional single head
		
<ul style="list-style-type: none"> <input checked="" type="checkbox"/> Guaranteed needle sharpness <input checked="" type="checkbox"/> Reduce the risk of accidental drops <input checked="" type="checkbox"/> Reduce pollution risks 		<ul style="list-style-type: none"> <input checked="" type="checkbox"/> Needle is easily damaged <input checked="" type="checkbox"/> Higher risk of accidental fall <input checked="" type="checkbox"/> Higher risk of contamination




- Double blade grinding technology**
With international advanced grinding technology, the needle tip has excellent puncture force.
- Silicified coating technology**
Advanced silicification technology, further reduce the resistance of the needle tip and needle tube, reduce puncture pain, bring more comfortable experience for patients.
- Thin - walled needle tube design**
KDL sterile dental needle is made of thin-walled medical stainless steel material. The steel needle with the same outer diameter has a larger inner diameter space to ensure the injection rate.

RW

TW



Metric and inch threads needle hub
Kindly sterile dental needle can be applied to the dental needle with metric or inch thread.



The mark is in line with the cutting edge direction.
The direction of the cutting edge can be clearly determined by observing the marking on the hub during injection, so that the anesthesia is more accurate.